

The Indigenous Knowledge
Social Network





25,000+
Users

120+
Northern
Communities



A Life Vest for Hudson Bay's Drifting Stewardship
NUNAVUUMMI TASIJARJUAMIUGUQATIGIIT KATUTJIQATIGIINGIT (NTK)¹

(Received 26 June 2007, accepted in revised form 5 March 2008)

“We therefore propose establishing a community-based monitoring and assessment network and a cooperative inter-jurisdictional stewardship body. Such a collaborative effort could make tangible progress toward sound, ecosystem-based integrated management of the Hudson Bay bioregion.”



DEPLOYMENT 2015-01-29 15:10:02

CLOSE

TOOL:



CTD CASTAWAY ¹

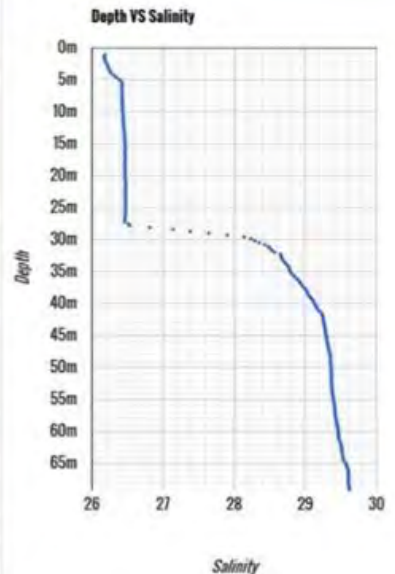
DATA
EDIT
DUPLICATE

CONTRIBUTORS



COMMUNITY: KULIJJARAAPIK

RESULTS: SALINITY



DEPLOYMENT IN-2 2015-02-10

CLOSE

TOOL:



ICE CORE SAMPLE ¹

DATA
EDIT
DUPLICATE

CONTRIBUTORS



COMMUNITY: IULUNAMI

RESULTS:

ICE CORE IMAGE:



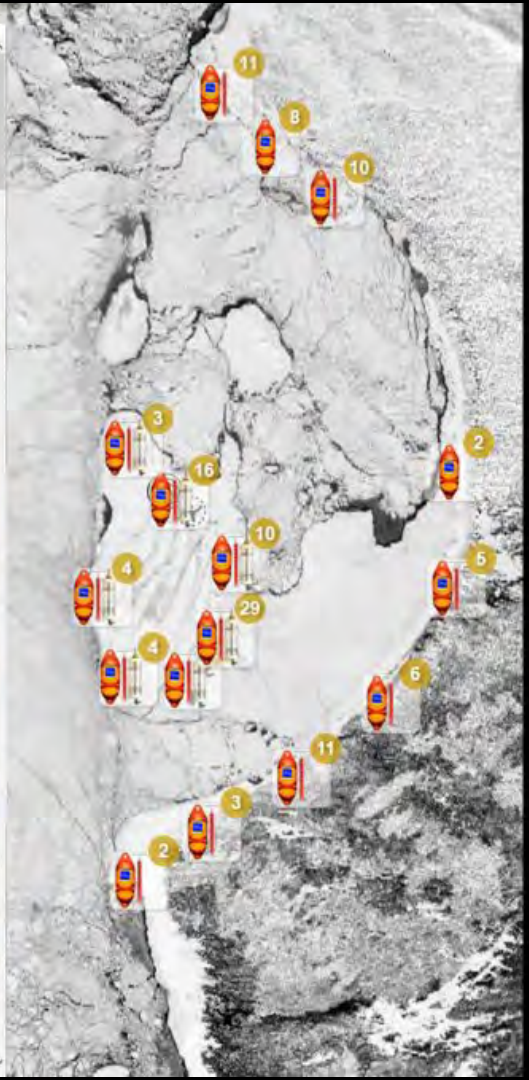
SECTIONS:

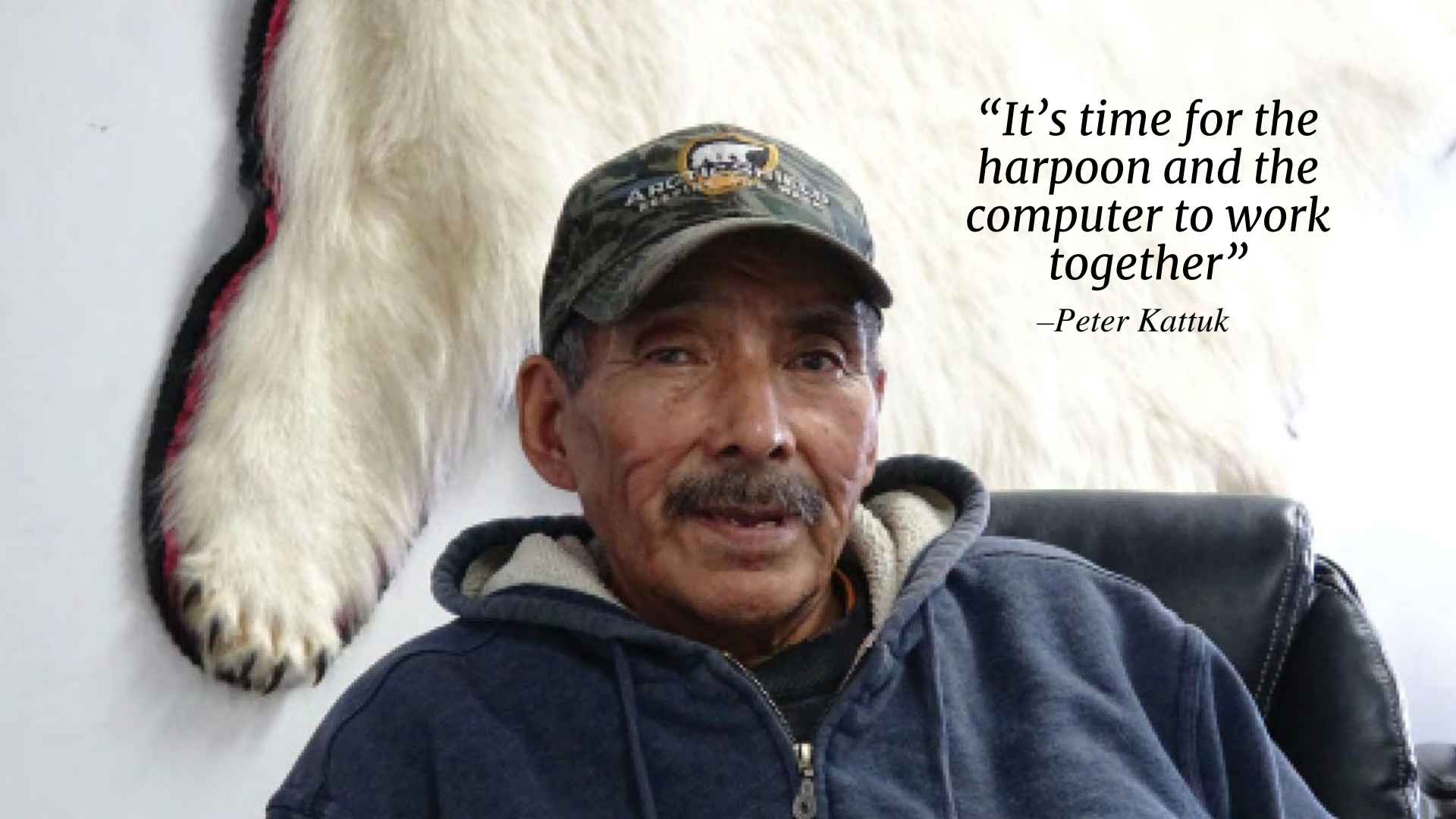
PHOTOS & VIDEOS



COMMENTS

LEAVE COMMENT





*“It’s time for the
harpoon and the
computer to work
together”*


—Peter Kattuk

11:14

Ringed Seal - Nattiq
Individual Harvest

Ice movement along the floe edge, due to currents.

Animal Diet



Stomach Contents Photo

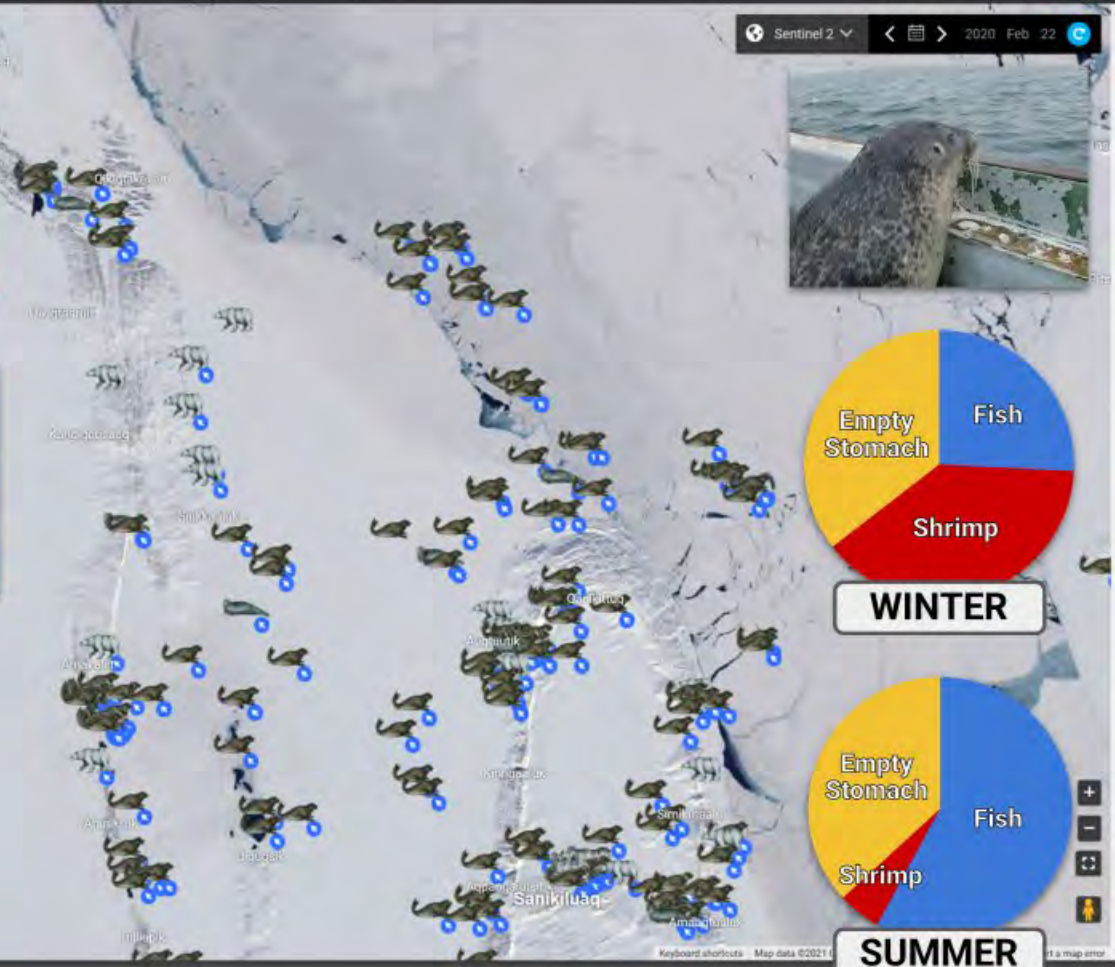
Stomach Contents

Qulliligaq • Capelin

Stomach Contents Notes

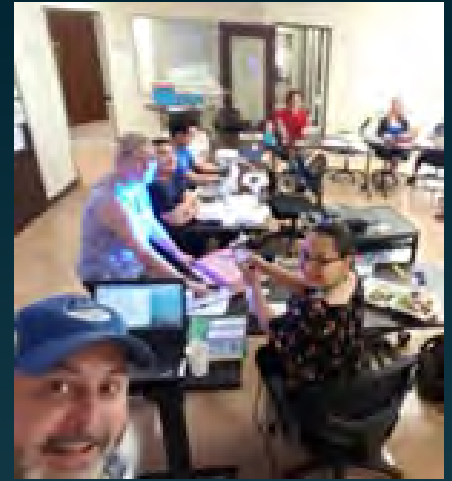


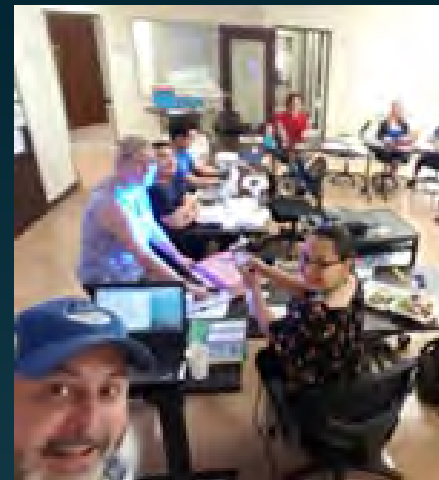
Total Harvested
354





S I K U





150+ workshops
45+ communities
1700+ participants



25k+
Users

75+
Posts per Day

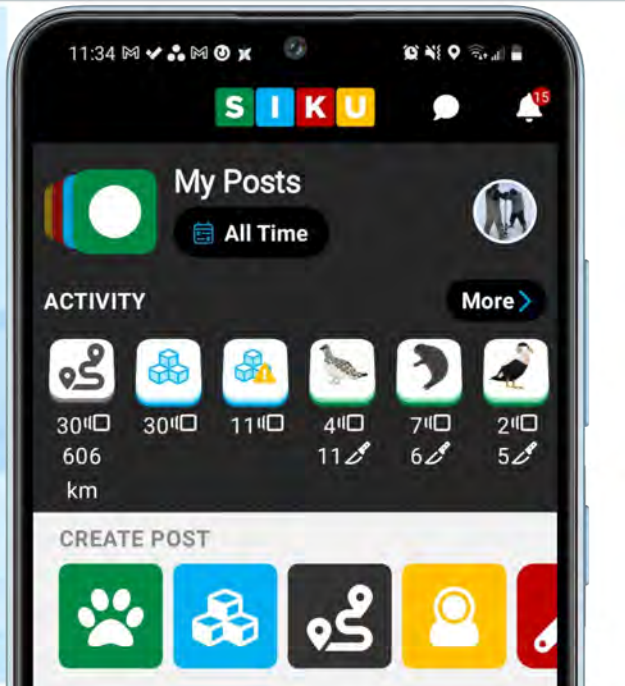
2,300,000+
Trip Tracks (km)

76k+
Posts

27+
New Users per Day

100+
Communities





Situational Awareness

Environmental Response

Emergency Response



Respect



Self-Determination



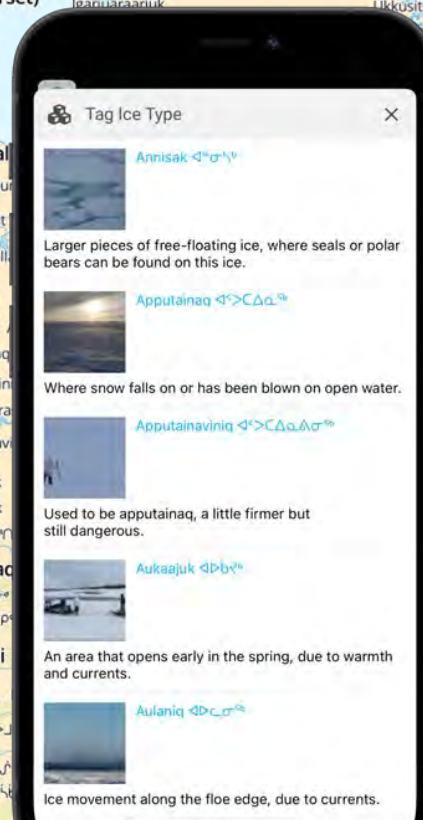
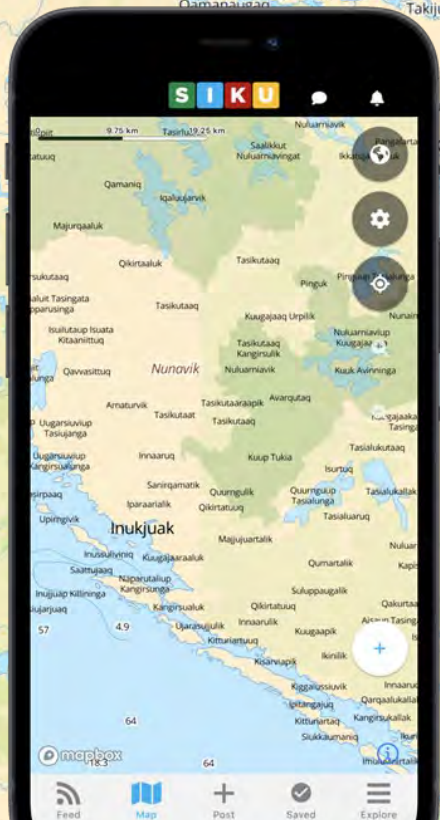
Intellectual Property



Integrity



Indigenous Environmental Terminology



Emergency Response Situational Awareness

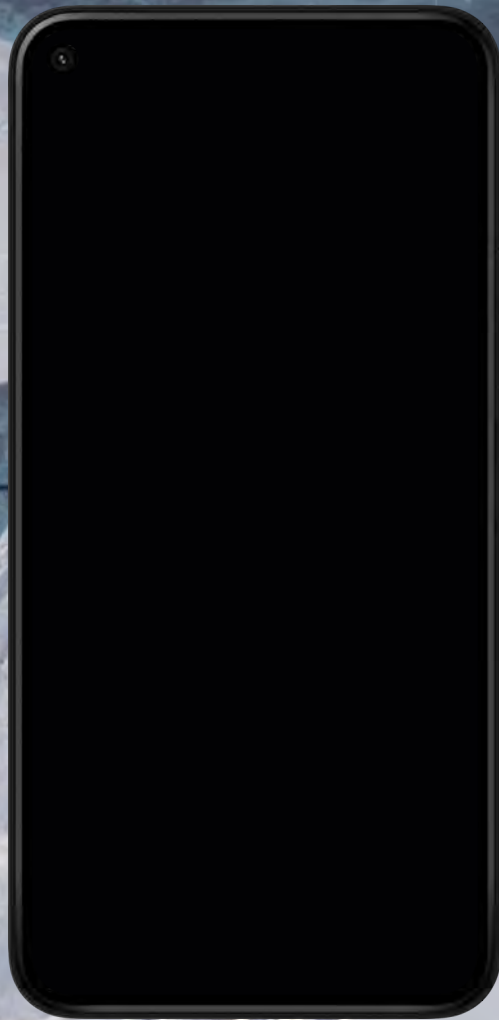


Ice & Snow Posts



Siiqtiniq

Qanikittuq



Dangerous Ice



Comments 0 Share Satellite

Siqummaq opened up into a floe edge

Southwest wind opened up Siqummaq into a floe edge, do not cross this kind of ice or you could end up on the wrong side of the floe edge

February 11th, 2019 at 08:00 EST



Johnassie Ippak made a Dangerous Ice Observation (📍 siqummaq) near Sanikiluaq

Arctic Eider Society

SIKU Hunting Stories Pilot Project

★ Featured



Sidebar Filter 2019-02-01 - 2019-02-28 Dangerous Ice

Satellite 2019 Feb 10



Dangerous Ice



Comments 0 Share Satellite

Siqummaq opened up into a floe edge
Southwest wind opened up Siqummaq into a floe edge, do not cross this kind of ice or you could end up on the wrong side of the floe edge

February 11th, 2019 at 08:00 EST

Johnassie Ippak made a Dangerous Ice Observation (📍 siqummaq) near Sanikiluaq

Arctic Eider Society

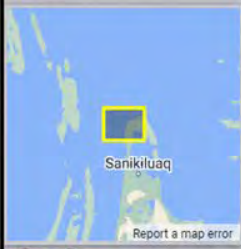
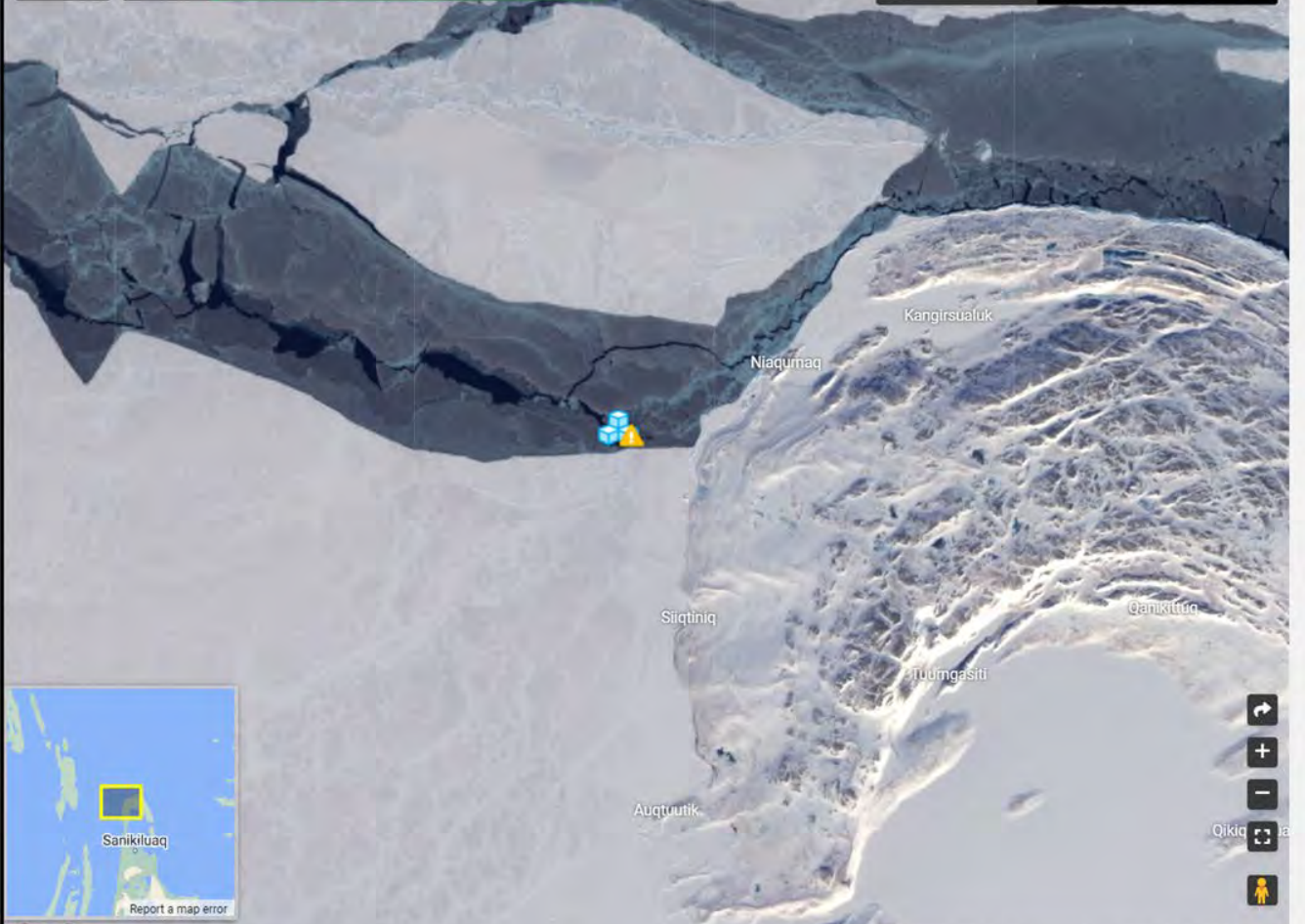
SIKU Hunting Stories Pilot Project

★ Featured



◀ Sidebar Filter 2019-02-01 - 2019-02-28 📍 Dangerous Ice ✕

📶 Sentinel 2 ◀ ▶ 2019 Feb 12

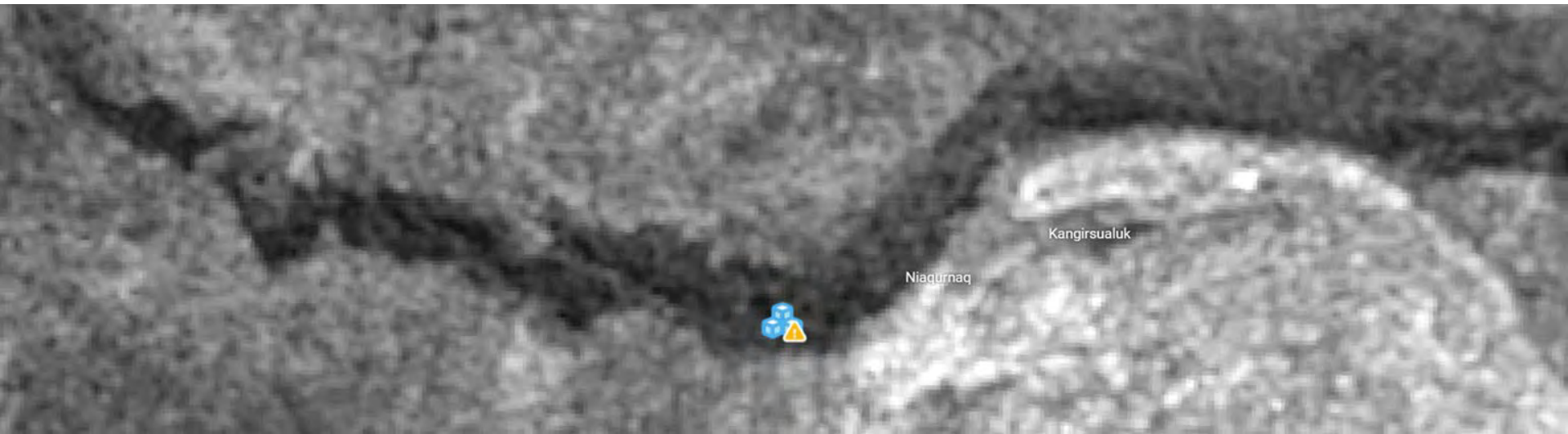
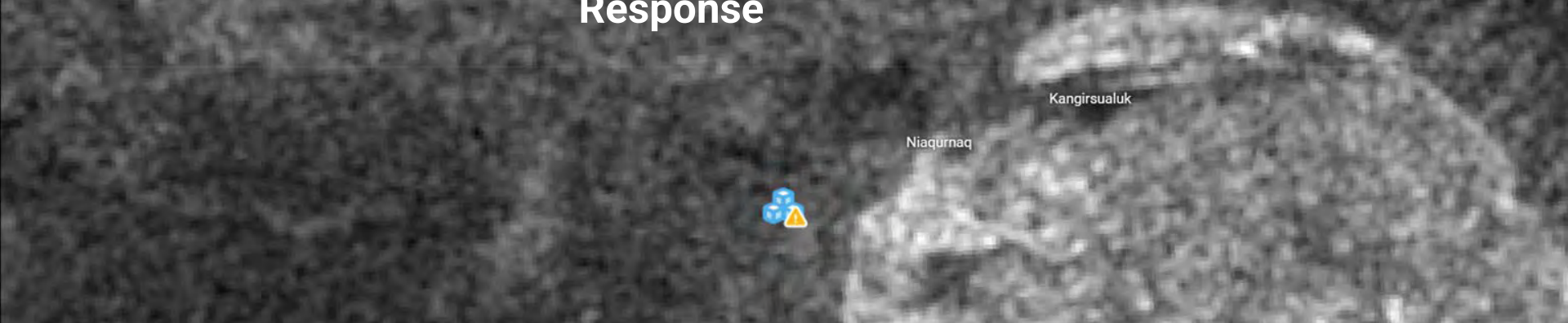


Google

Situational Awareness

Environmental Response

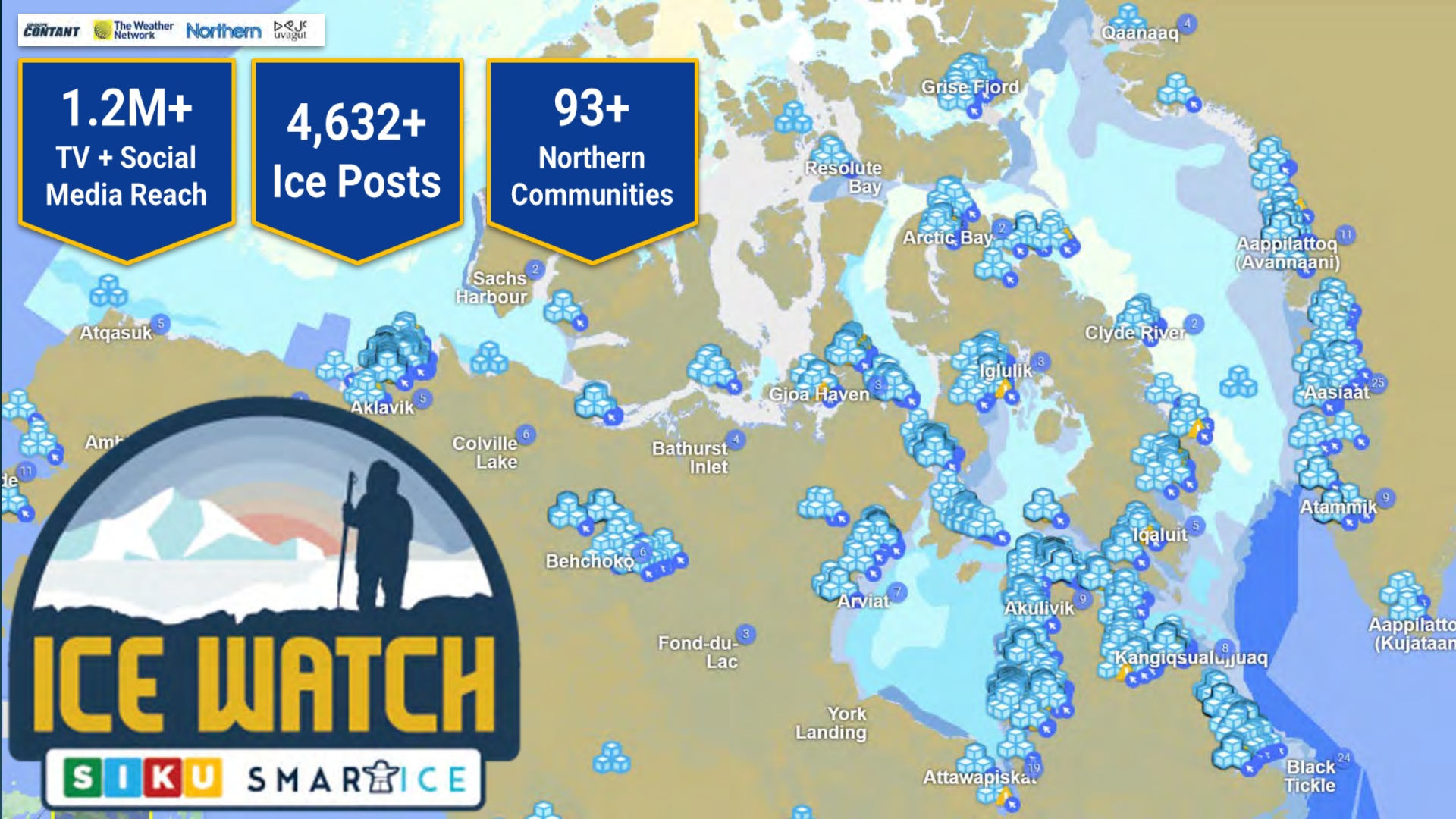
Emergency Response



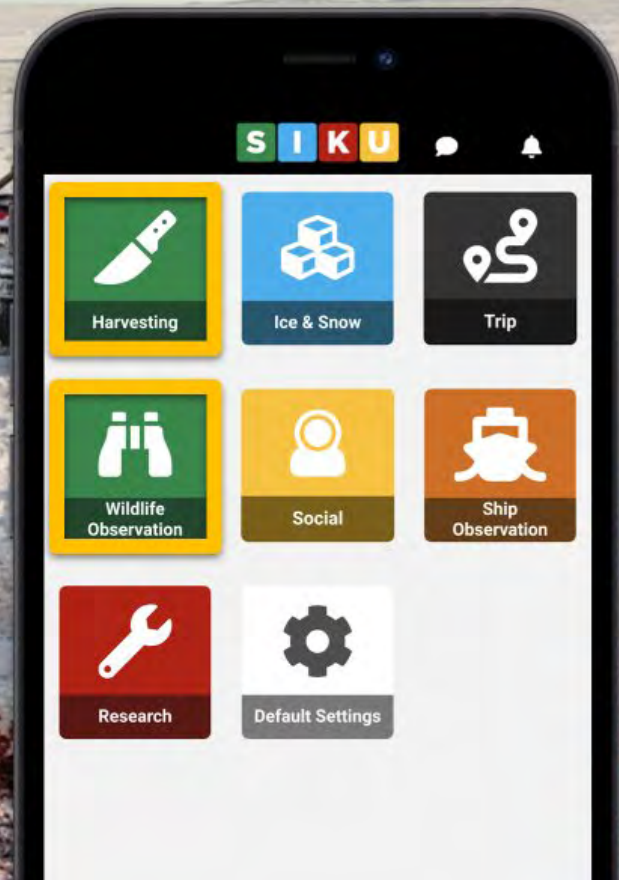
1.2M+
TV + Social
Media Reach

4,632+
Ice Posts

93+
Northern
Communities



Wildlife Posts



2244+
Goose Posts
Made

Across
51
Communities





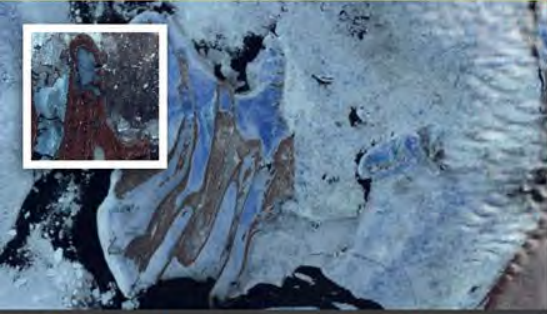
QIKIQTAIT

ᑭᑭᑭᑭᑭᑭᑭᑭ

CASE STUDY



Qikiqtait



Filter Map Message Share Report

Feed About

Description & Details

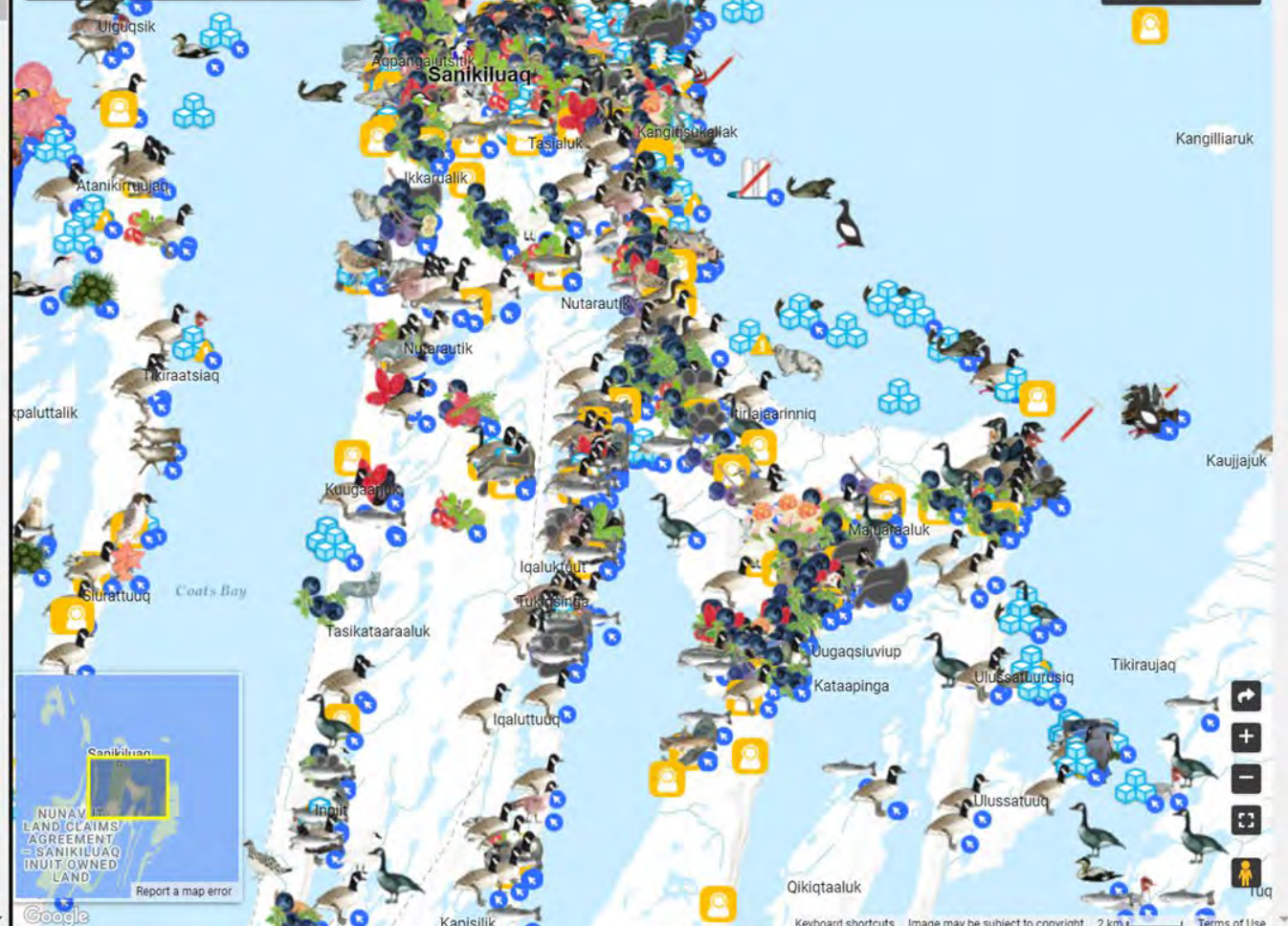
Creating a protected area for the Belcher Islands archipelago. A project by the Arctic Eider Society, Hamlet of Sanikiluaq and Sanikiluaq HTA with Qikiqtani Inuit Association

Community Reach Sanikiluaq

Member Users



Sidebar Filter Last 6 Months



Report a map error

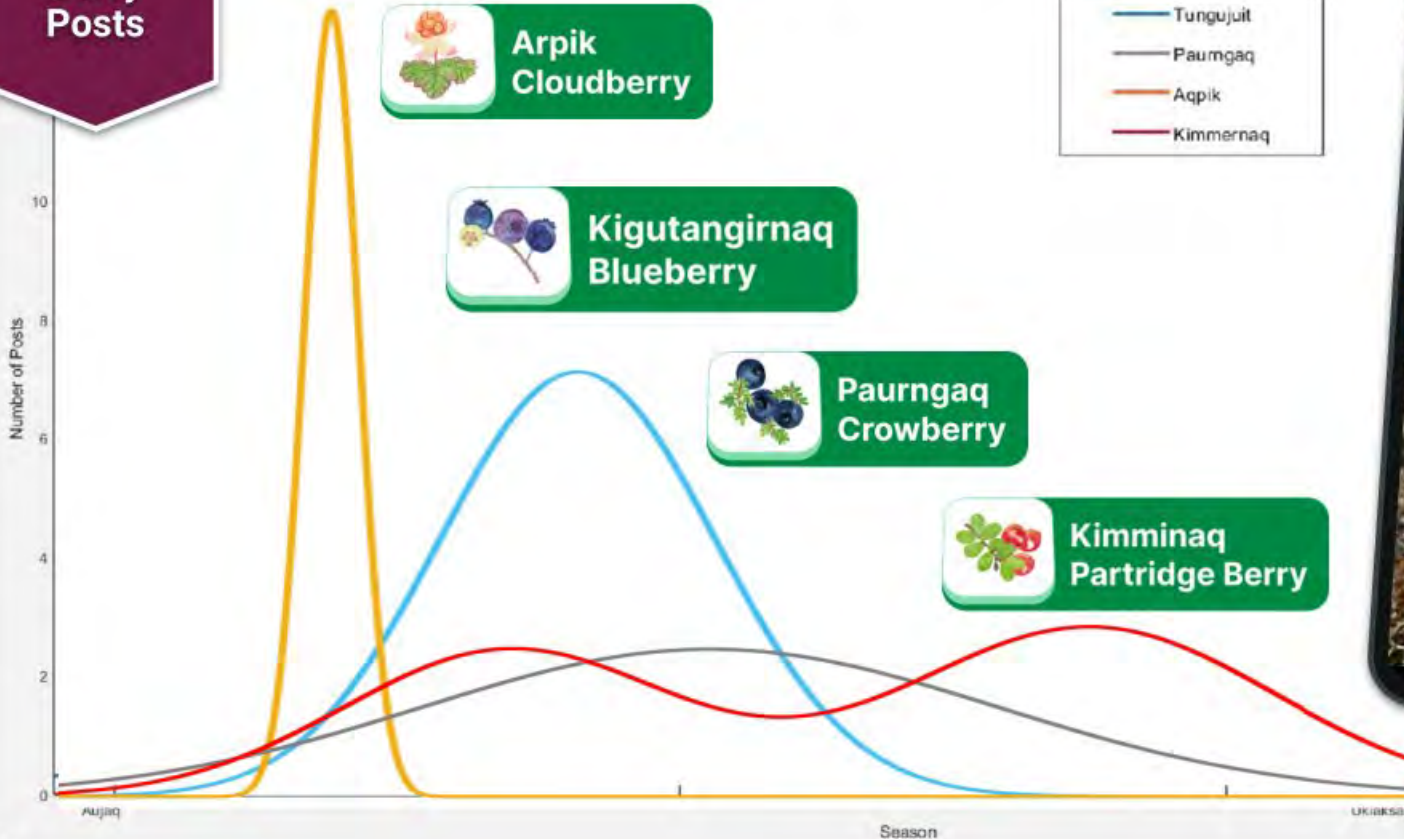
Topo Map



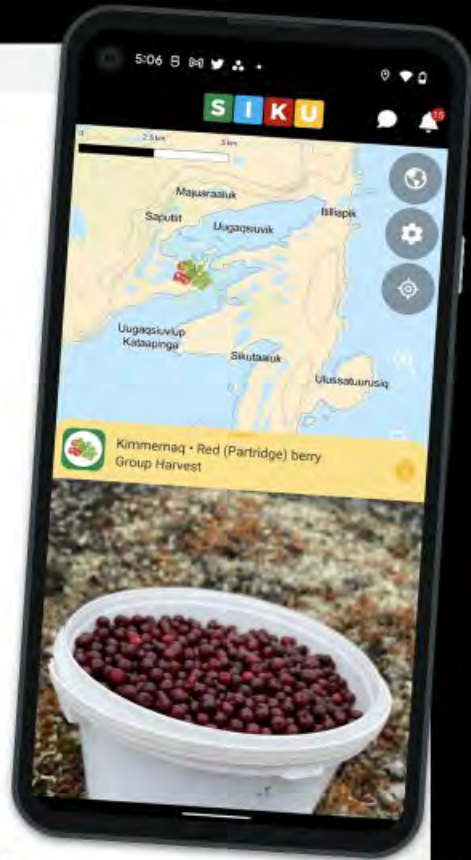
Keyboard shortcuts Image may be subject to copyright 2 km Terms of Use

2020 Berry Posts

Berry Seasonality



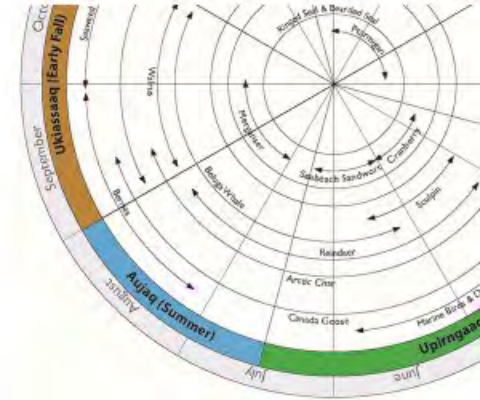
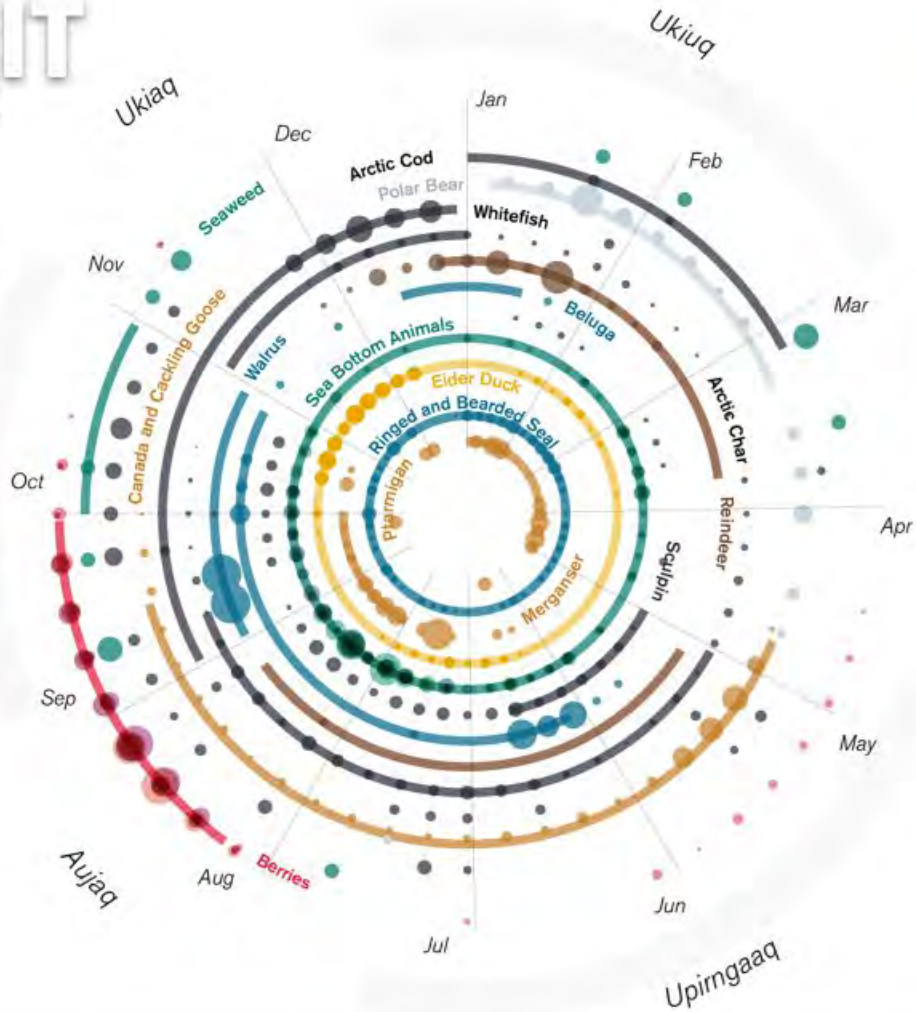
- Tungujuit
- Paungaq
- Aqpik
- Kimmernaq



QIKIQTAIT

ᑦᓂᓂᓂᓂᓂᓂ

Inuit Calendar Seasonal Resources Inventory



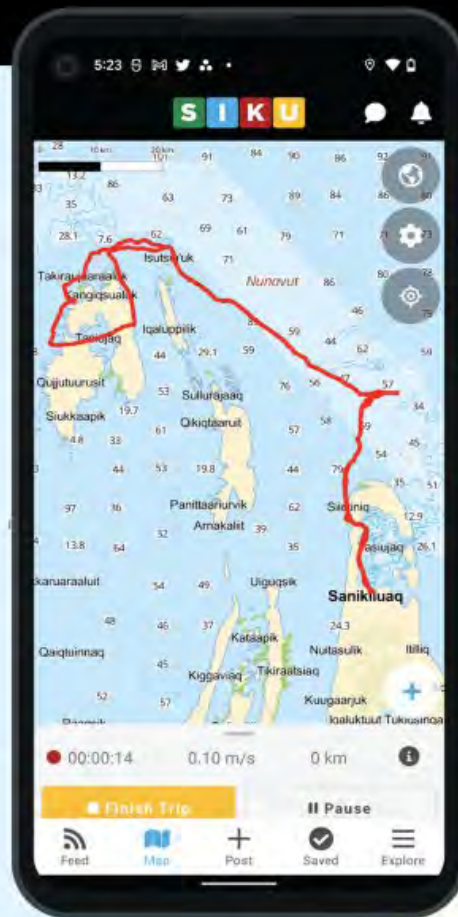
Upingassaaq





Trips & SIKU GPS

Trip

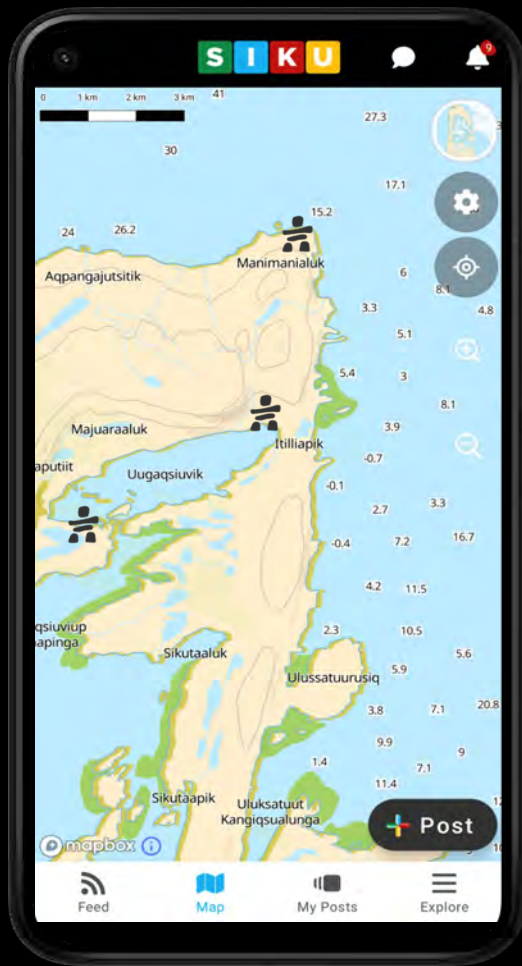


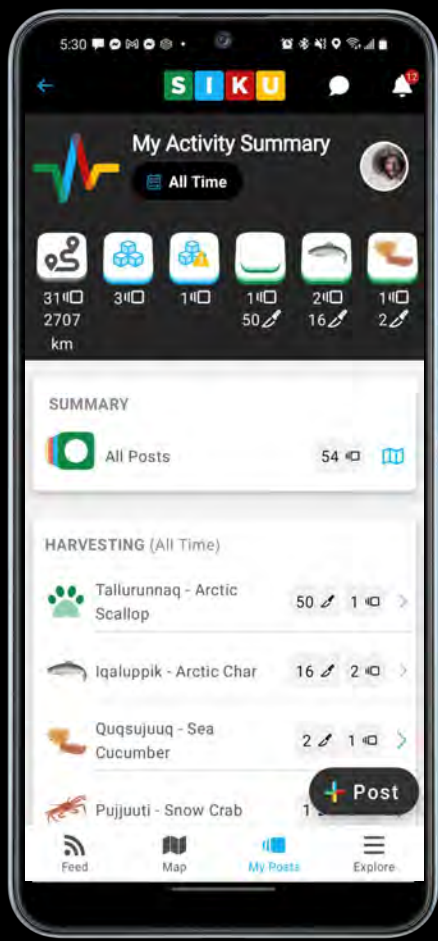
Total km
379,281

Total
Trips
5,293



Location /
Waypoints





Future

InReach Integration



Trip

Trip Planning

Situational Awareness

Environmental

Emergency Response

Environmental Response

Situational Awareness

In Progress



Weather





Impact Measurement/Analytics



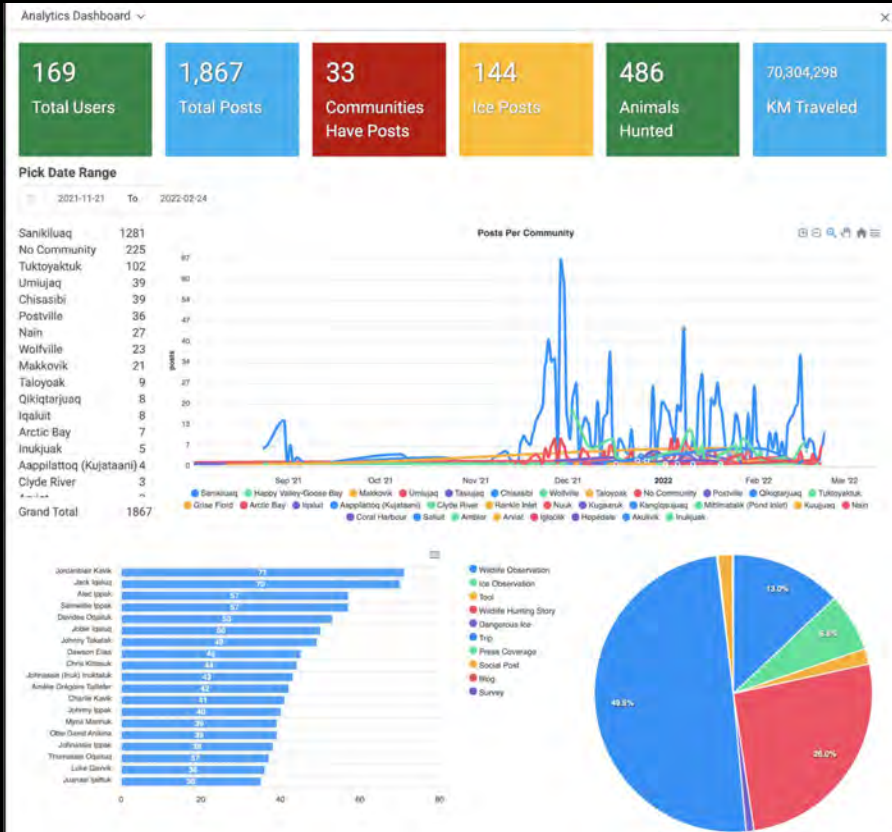
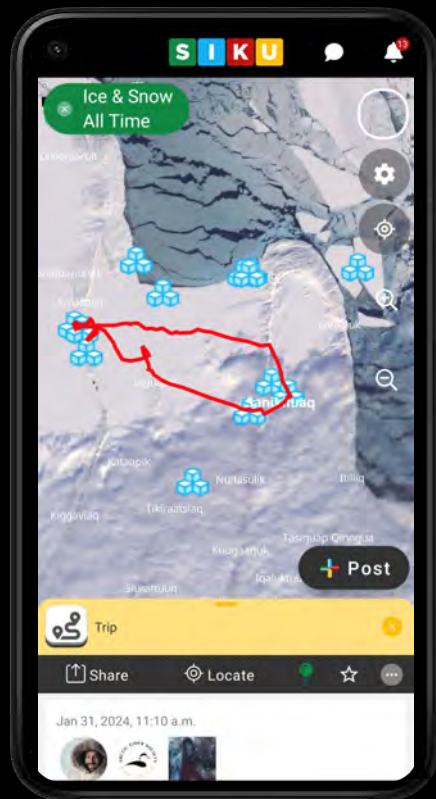
Trip



Weather



Hazards & Impacts



Situational Awareness

Environmental

Emergency Response

"Funded by the Government of Canada"

Funded by the Government of Canada
Financé par le gouvernement du Canada

Canada



Environment and
Climate Change Canada



Fisheries and Oceans
Canada



Natural Resources
Canada



Crown-Indigenous Relations
and Northern Affairs Canada
Relations Couronne-Autochtones
et Affaires du Nord Canada



NSERC
CRSNG



Polar Knowledge
Canada

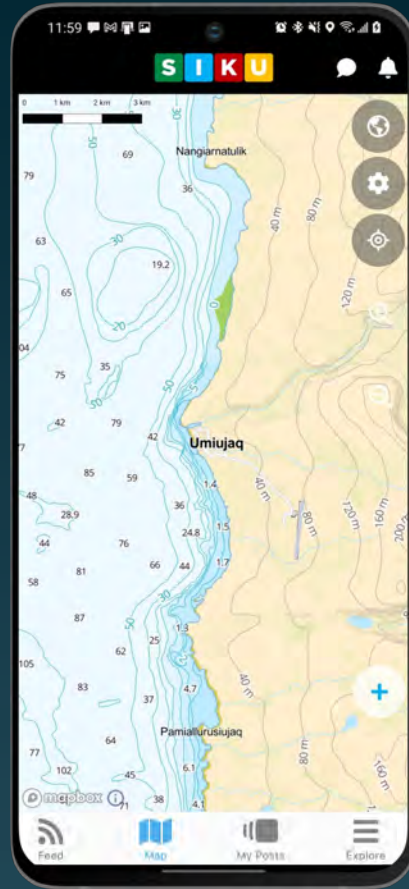
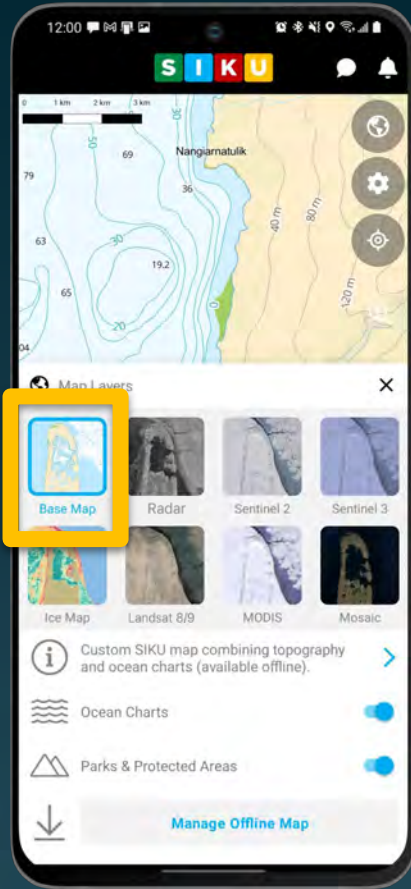


"Groups That Use SIKU as a Service to Share Data"





Map Services

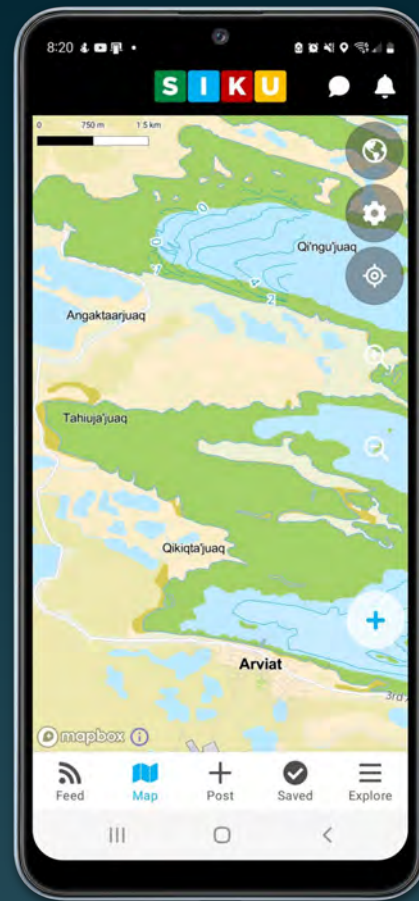




Topographic & Hydrographic



Situational Awareness Available Now



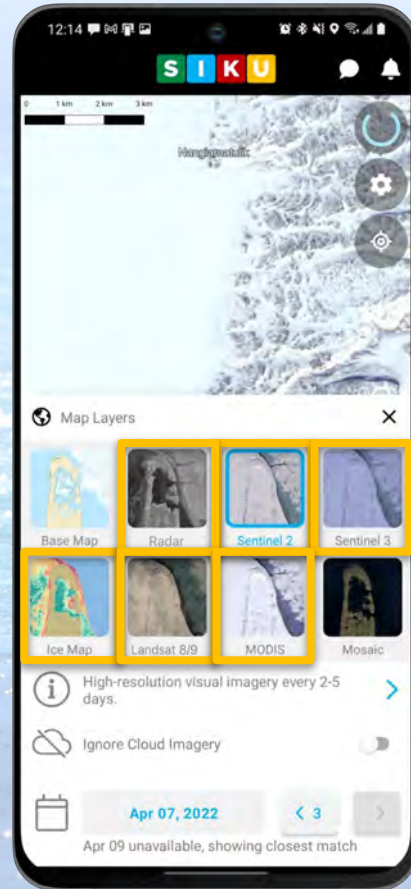
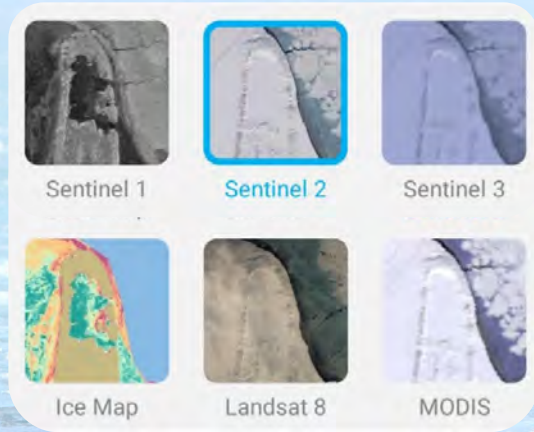


Community Hydrography

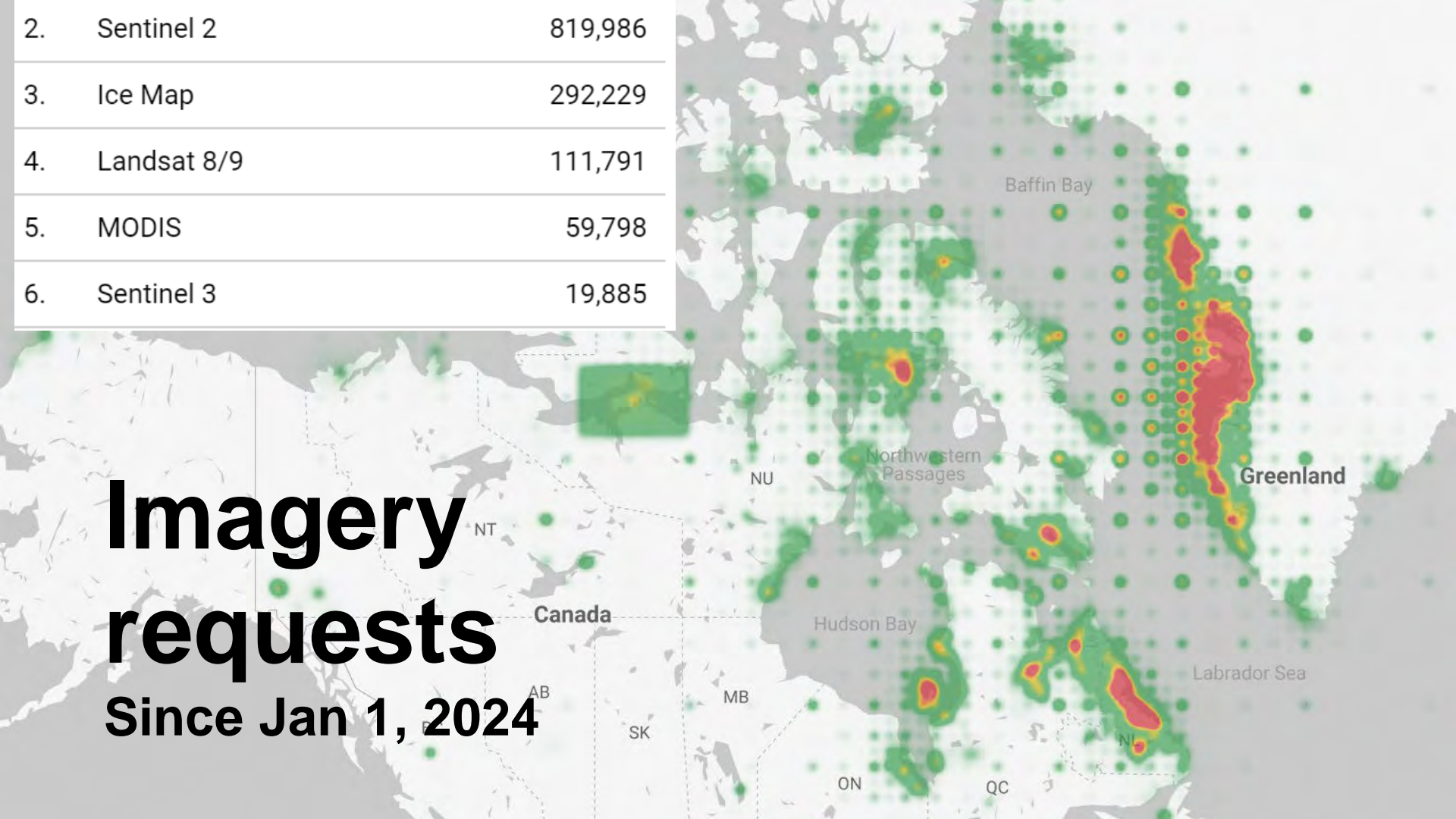
Interested communities can contact:

- DFO.CommunityHydrography-HydrographieCommunautaire.MPO@dfo-mpo.gc.ca
- Gabriel.Montpetit-Allard@dfo-mpo-gc.ca

Satellites



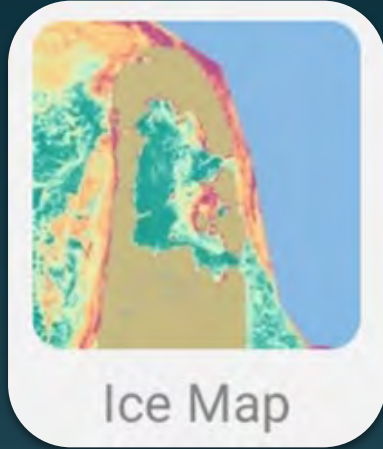
2.	Sentinel 2	819,986
3.	Ice Map	292,229
4.	Landsat 8/9	111,791
5.	MODIS	59,798
6.	Sentinel 3	19,885



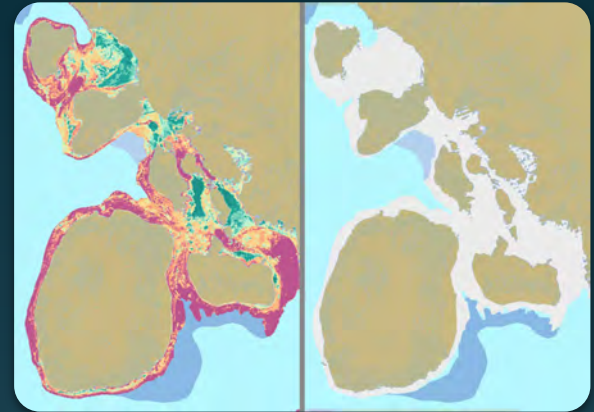
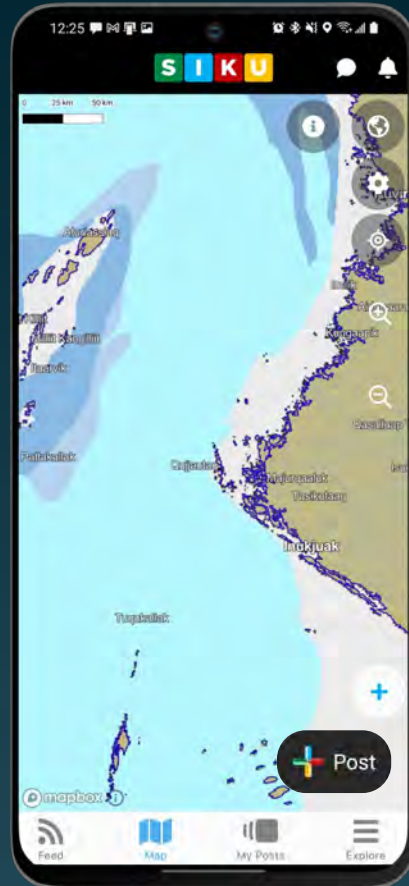
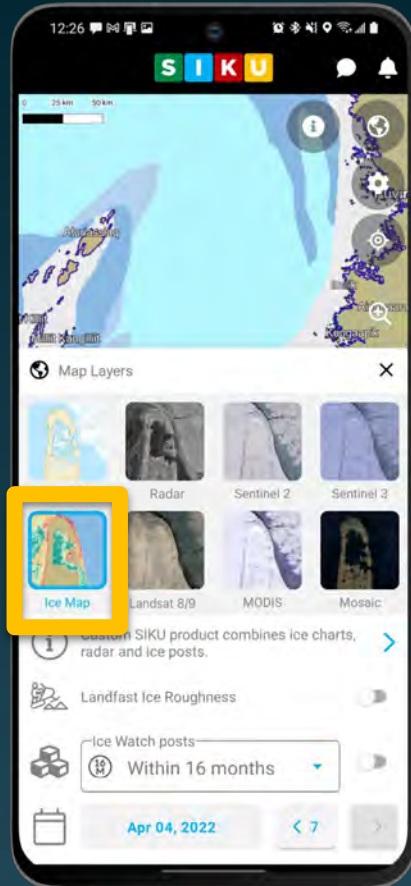
Imagery requests

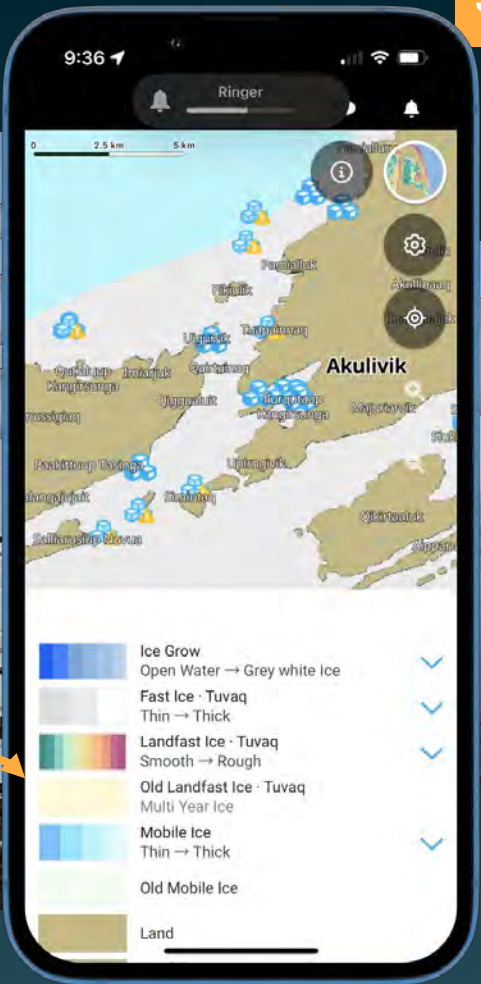
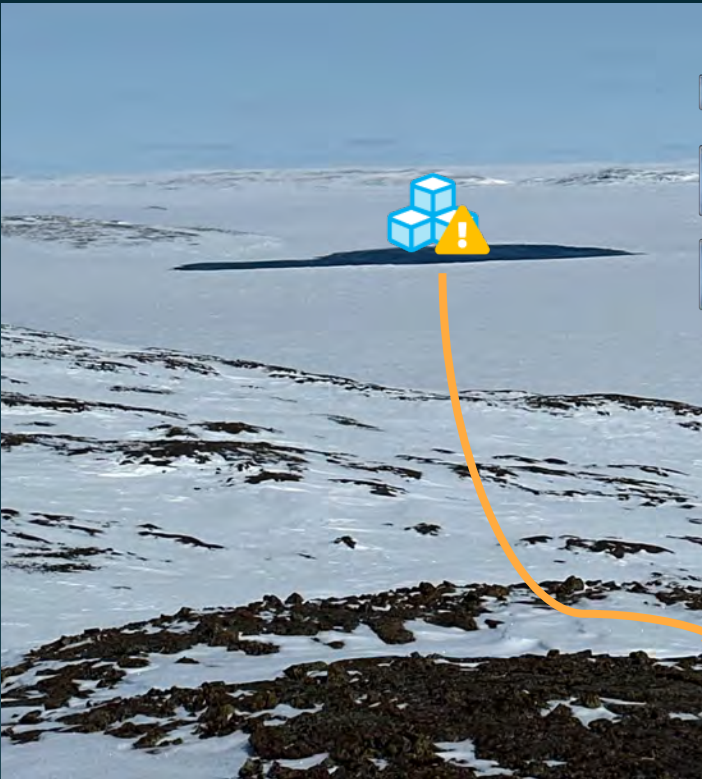
Since Jan 1, 2024

SIKU Ice Map



Situational Awareness Available Now





NainAtlas2016 Command Search (Alt+Q) Shawna - SmartICE SD

Project Map Insert Analysis View Edit Imagery Share Feature Layer Labeling Data Linear Referencing

Clipboard: Cut, Copy, Paste, Copy Path, Explore, Bookmarks, Go To XY

Layer: Basemap, Add Data

Selection: Select, Select By Attributes, Select By Location, Clear, Zoom To

Inquiry: Measure, Locate, Infographics, Coordinate Conversion

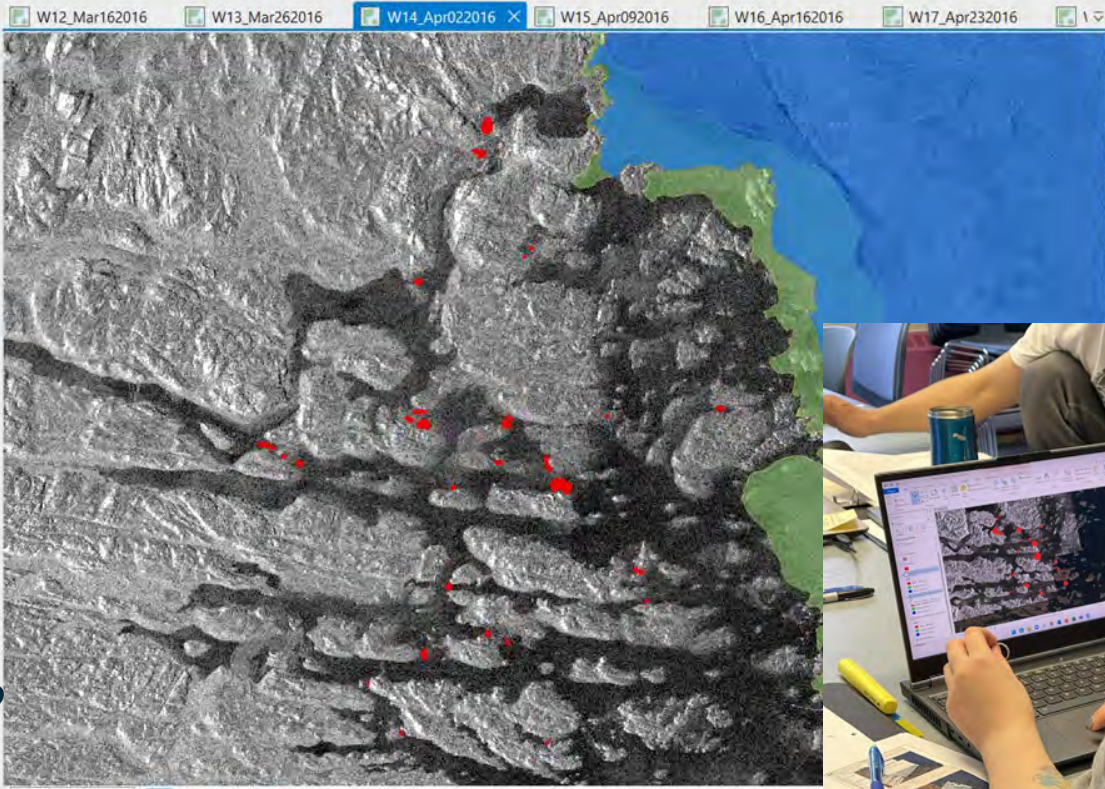
Labeling: Pause, Lock, View Unplaced, Convert, Download Map, Remove

Contents

Search

Drawing Order

- W14_Apr022016
 - Rattles_JQ
 - Nain_ROI
 - W14_Apr02/082016
 - Apr022016_Open
 - Dangerous_Moving_Apr72016
 - Dangerous_Forming_April72016
 - Map Image
 - S1A_EW_GRDH_1SDH_20160402T214054_20160402T
 - S1A_EW_GRDH_1SDH_20160404T212428_20160404T
 - S1A_EW_GRDH_1SDH_20160407T103559_20160407T
 - S1A_IW_GRDH_1SDV_20160407T214853_20160407T
 - W14_Apr02/082016_Raster/Merge Files
 - World Topographic Map
 - World Hillshade



Symbology - Apr022016_Open

Format Polygon Symbol

Gallery Properties

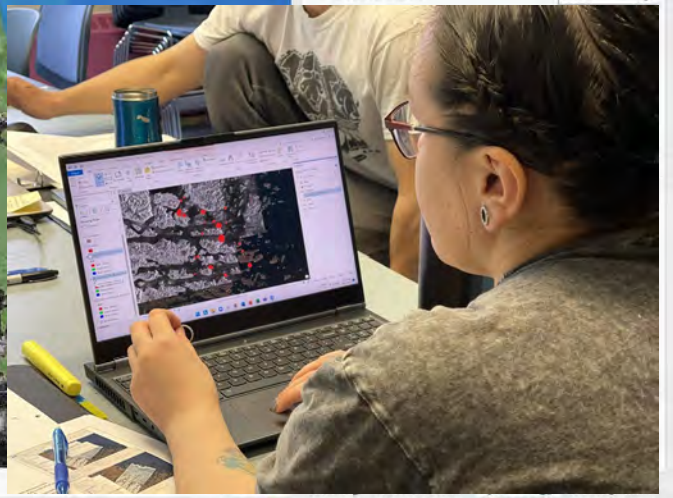
Enable scale-based sizing

Appearance

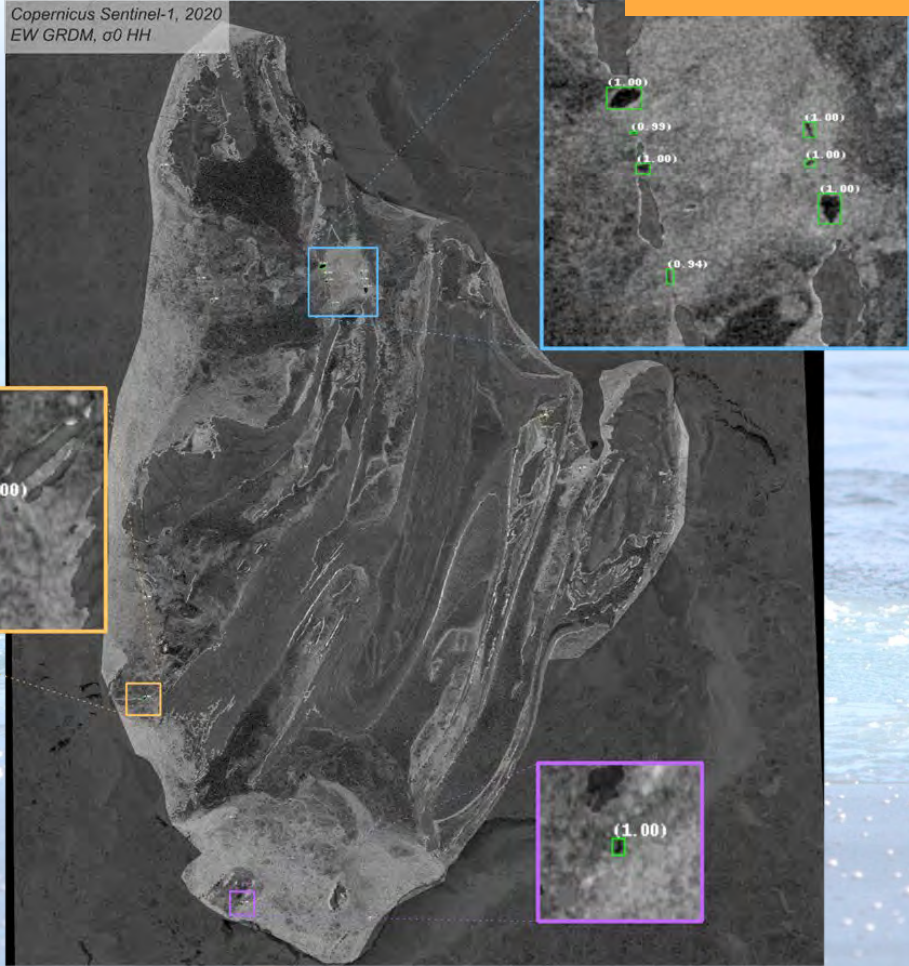
Color: [Red swatch]

Outline color: [Red swatch]

Outline width: 1 pt

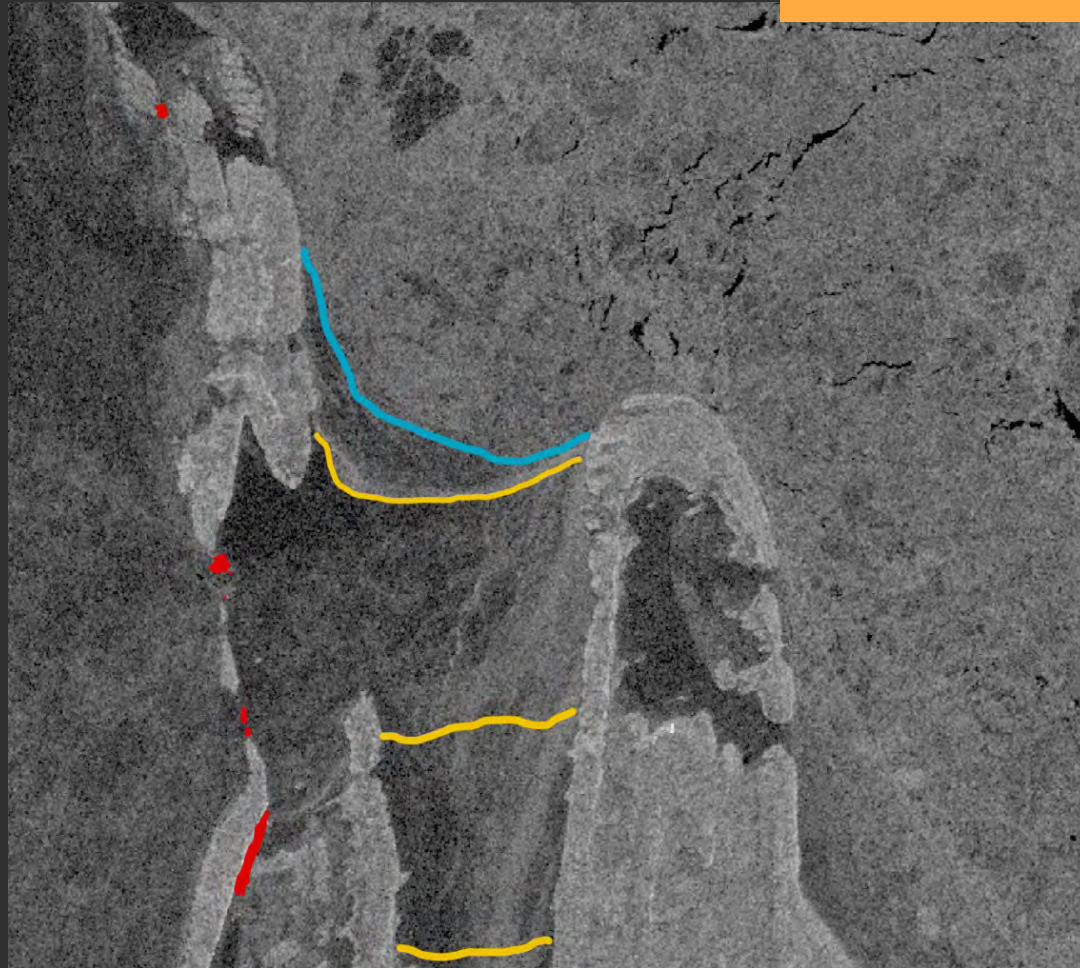


1:512,869 61.4192502°W 56.7628573°N





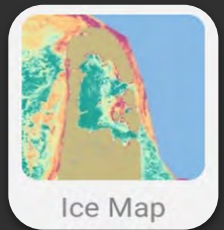
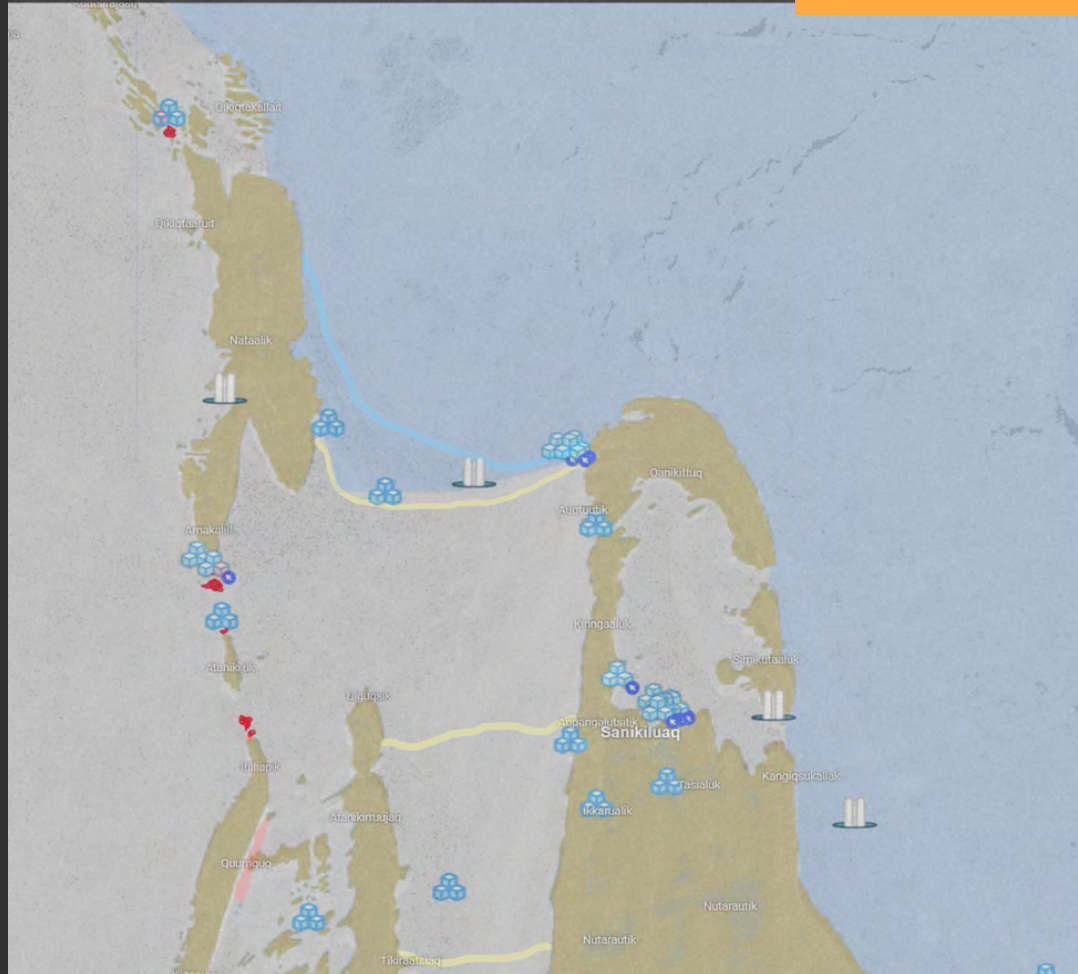
Hazards & Impacts





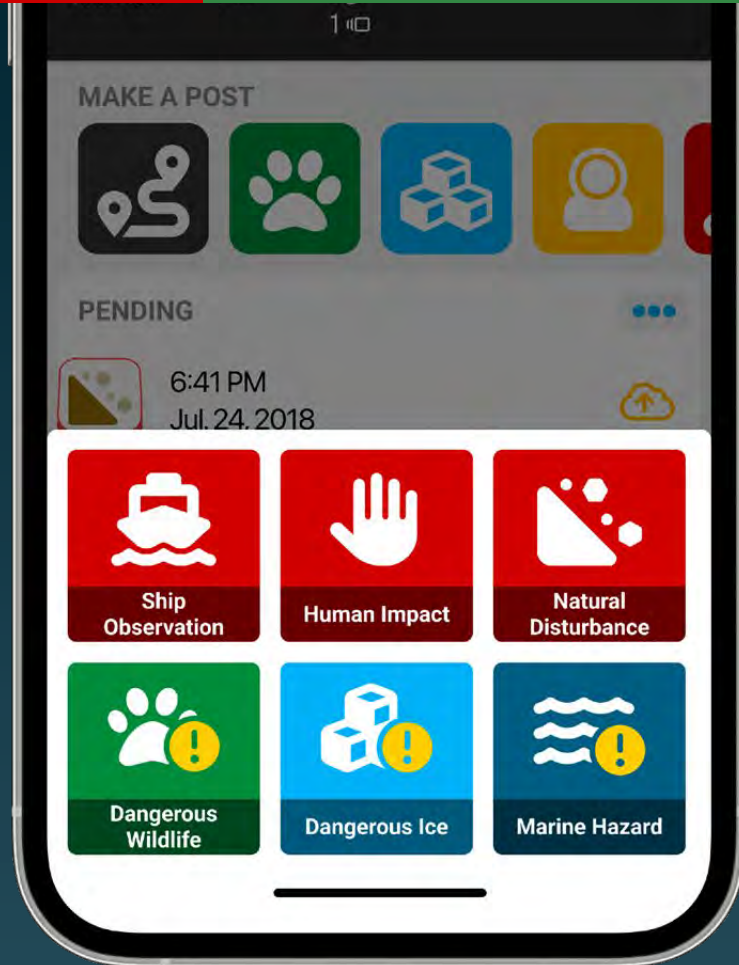
**Hazards &
Impacts**

Situational Awareness **Future**



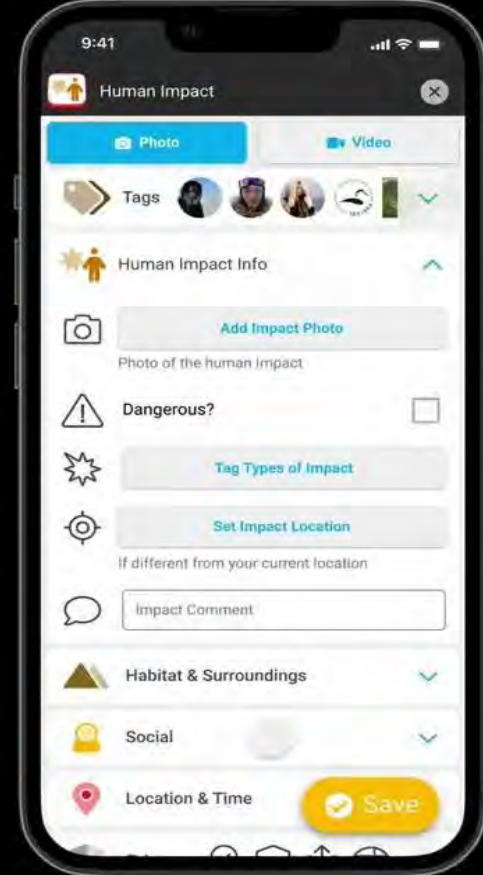


Hazards & Impacts





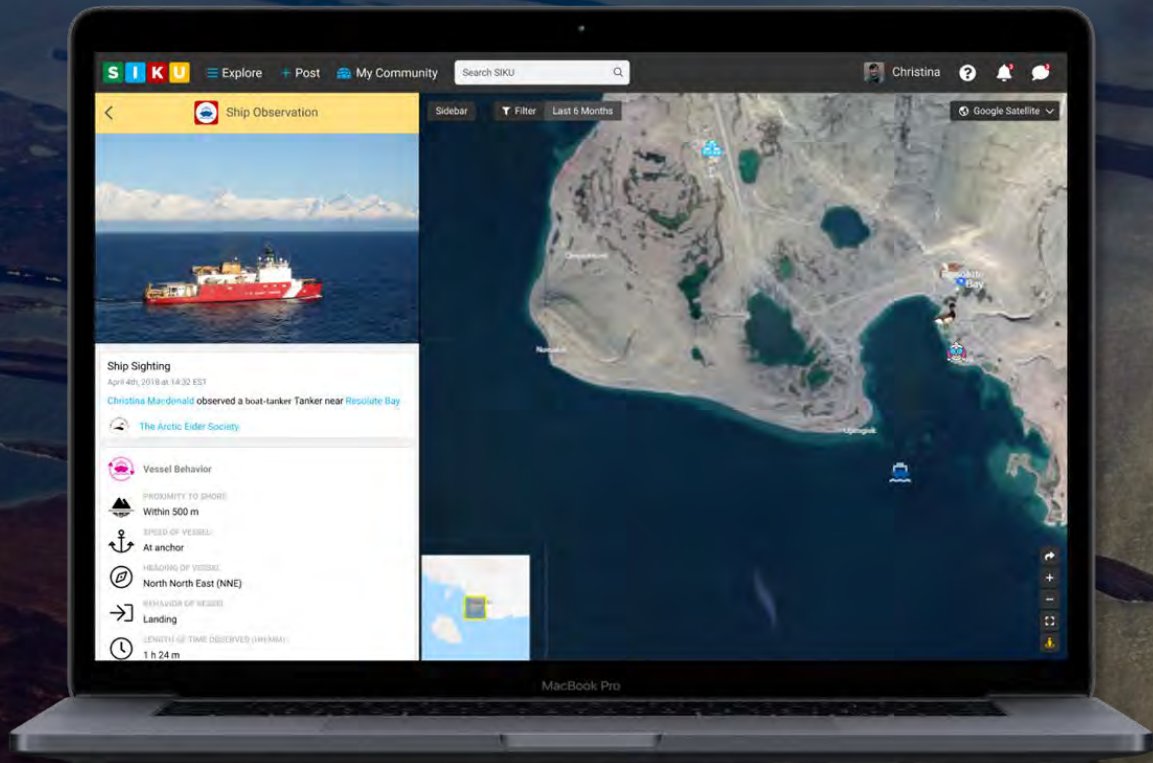
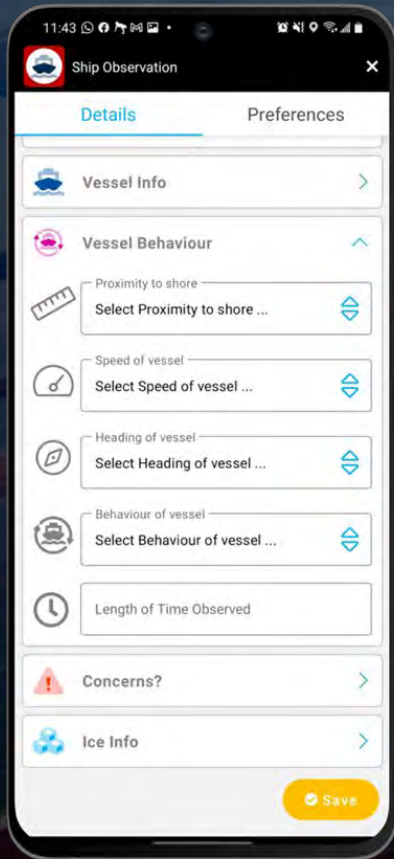
Hazards & Impacts





Environmental Response Situational Awareness Available Now

SIKU Ship Observation Tool



How would up-to-date AIS data benefit your community?



Ship
Observation



2011-2016



Get in touch!



SIKU Support Button



info@siku.org



facebook.com/siku.org



(613) 416-9607

joelheath@arcticeider.com

becky.segal@arcticeider.com

